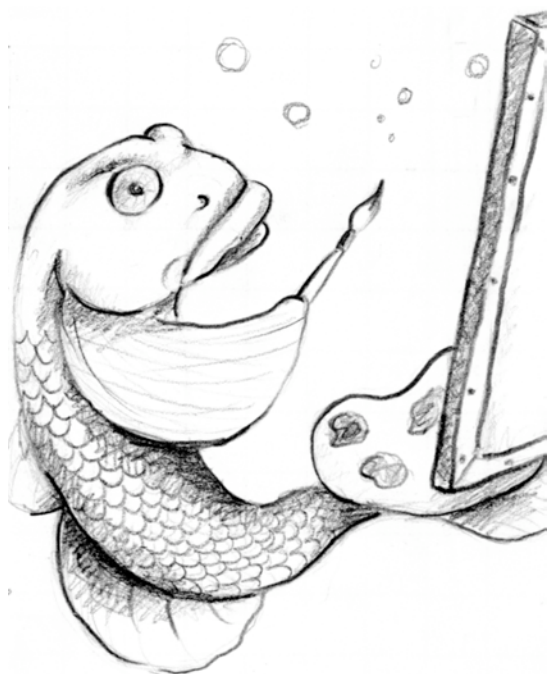


SUL BEL DANUBIO BLU

Op. 314

Testo: C. Strada

(Tempo di Valzer)



Musical notation for the first system (measures 1-4). The key signature is two sharps (F# and C#), and the time signature is 3/4. The melody is in the treble clef, and the accompaniment is in the bass clef. The lyrics are: *p* il so - le chis - sà se

Musical notation for the second system (measures 5-8). The melody continues in the treble clef, and the bass clef accompaniment provides harmonic support. The lyrics are: ver - de sì fa? il

Musical notation for the third system (measures 9-12). The melody concludes in the treble clef, and the bass clef accompaniment ends with a final chord. The lyrics are: pra - to non so se

13

far - lo bor - deaux... sul cie - lo, mi

Musical notation for measures 13-17, including vocal line and piano accompaniment.

18

sa, *crescendo* sta be - neun lùl - là.

Musical notation for measures 18-22, including vocal line and piano accompaniment.

23

f mail fiu - me che a - mo di

Musical notation for measures 23-27, including vocal line and piano accompaniment.

28

pù, lo di - pin - go tut - to blu!

Musical notation for measures 28-32, including vocal line and piano accompaniment.

Johann Strauss



Vienna 1825 - 1899